

# MONTHLY MEMBERSHIP PROGRESS REPORT

District 201V6

Results as of: 5/31/2026

GMT:

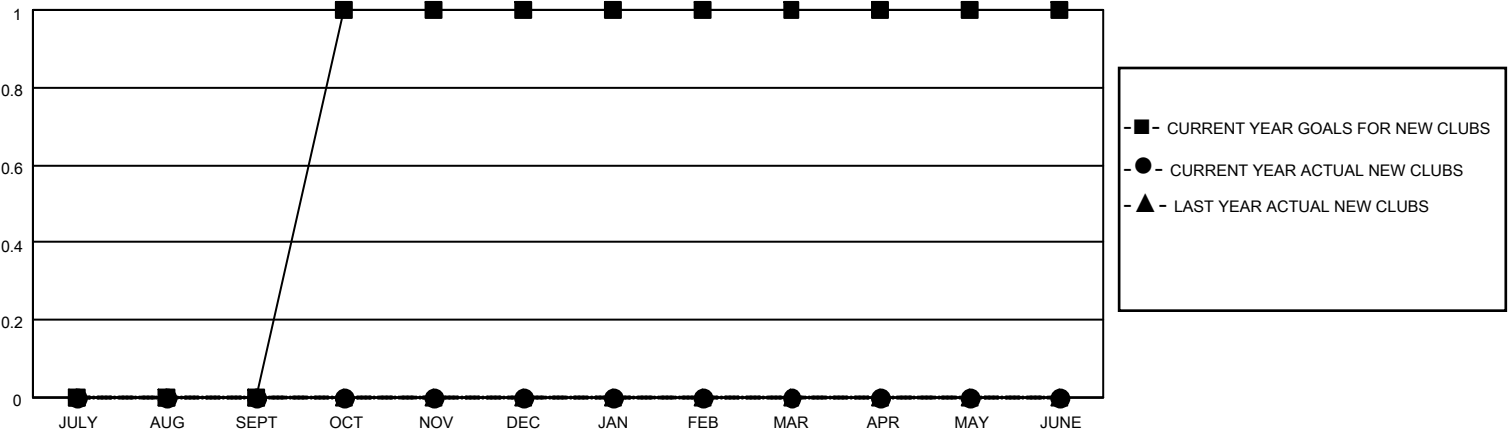
LOCATION AUSTRALIA

GMT CA

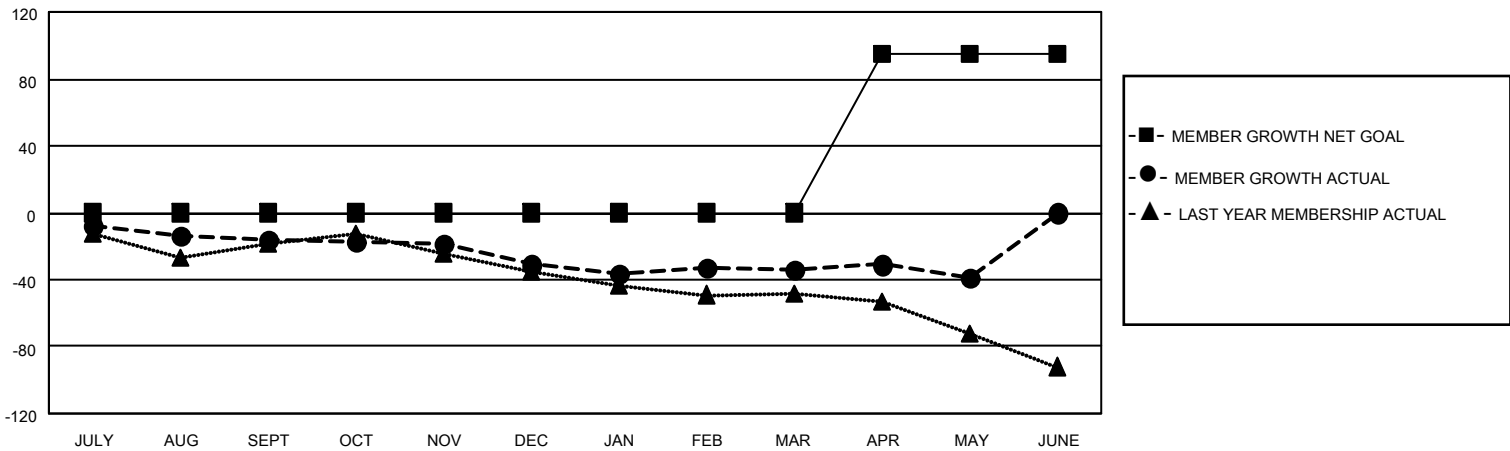
Clubs			
RESULTS FOR 2025-2026			
QUARTER	NEW CLUB GOAL	NEW CLUBS	DROPPED CLUBS
JULY/AUG/SEPT	0	0	1
OCT/NOV/DEC	1	0	0
JAN/FEB/MAR	0	0	0
APR/MAY/JUNE	0	0	0

Members			
RESULTS FOR 2025-2026			
QUARTER	MEMBER GROWTH NET GOAL	MEMBER GROWTH ACTUAL	DROPPED MEMBERS ACTUAL (including transfers)
JULY/AUG/SEPT	0	15	25
OCT/NOV/DEC	0	19	33
JAN/FEB/MAR	0	23	23
APR/MAY/JUNE	95	16	17

GOALS AND ACTUAL NEW CLUBS CUMULATIVE



GOALS AND ACTUAL MEMBERS CUMULATIVE



DROPPED CLUBS: 1	29 CLUBS OF 55 ADDED 1 OR MORE NEW MEMBERS	<b>GENDER DISTRIBUTION</b> MALE 621 (64.62%) FEMALE 339 (35.28%)
<b>DROPPED MEMBERS</b> DECEASED 15 CLUB CANCELLED 0 OTHER 82 TOTAL 97	<a href="#">CLICK HERE FOR CUMULATIVE MEMBERSHIP DATA</a>	TOTAL FAMILY UNIT MEMBERS 124 FAMILY MEMBERS PAYING HALF DUES 62